

EUROCRAFT EXPLORER 44



EUROCRAFT EXPLORER 44

BUILDER : Eurocraft

MODEL: Explorer 44

YEAR: 2011 **REFIT:** 2021

ENGINES : 2 x MTU M60 2000 600 KW

LENGTH: 43.60 M

CABINS: 6

The 2011 Eurocraft Explorer 44 is a luxurious and robust explorer yacht, ideal for long cruises. Highlights include

- Ice breaking steel hull and large fuel capacity for extended range.
- Twin MTU 2000 engines for reliability and performance.
- 6 staterooms for up to 12 guests plus an owner's suite.
- Spacious and sophisticated living areas.
- Zero-speed stabilisers for optimum comfort.
- Complete and professional equipment for exploration and life on board.
- High quality Eurocraft construction.
- Represents a unique opportunity in the exploration yacht market.

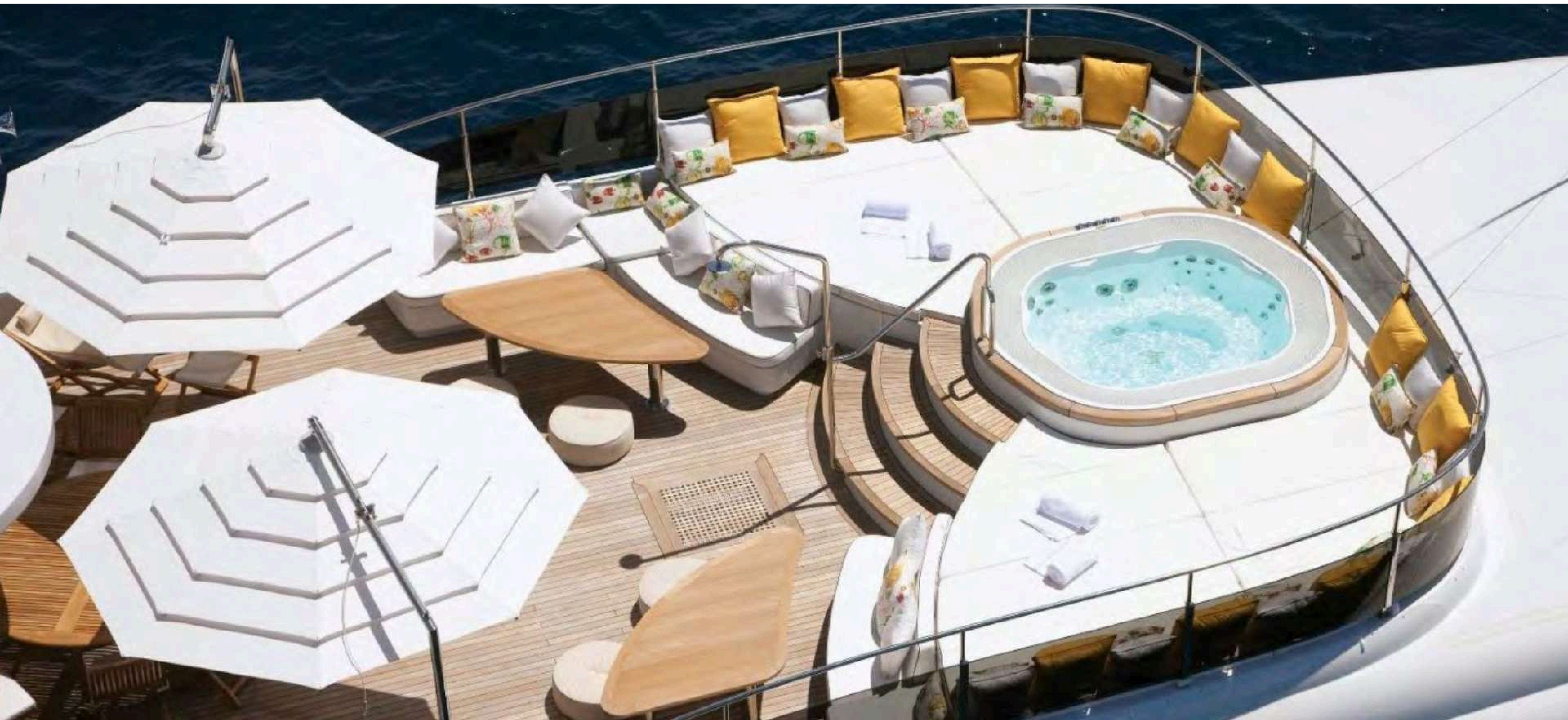
PRICE: 32 000 000 € Vat not paid







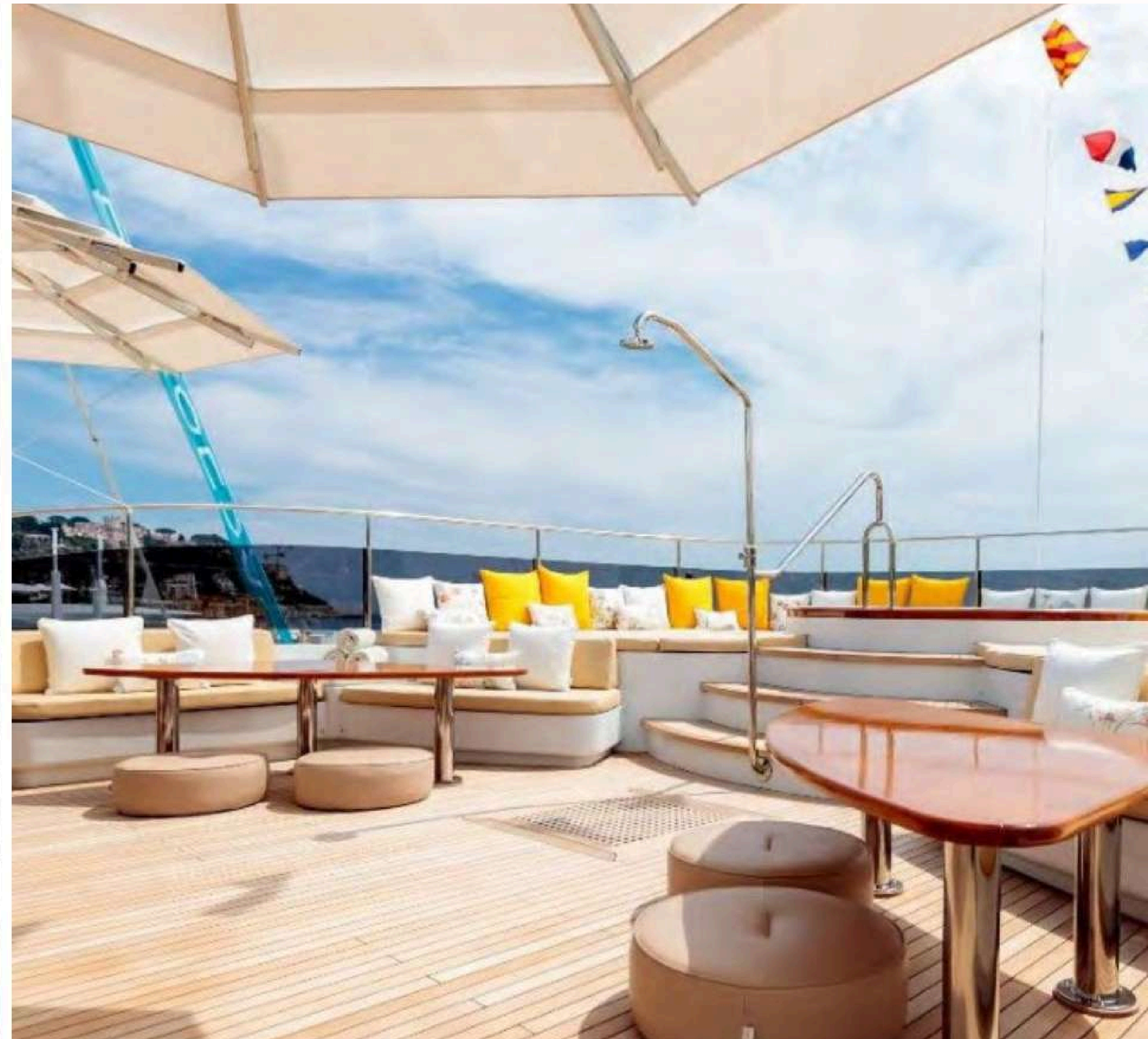


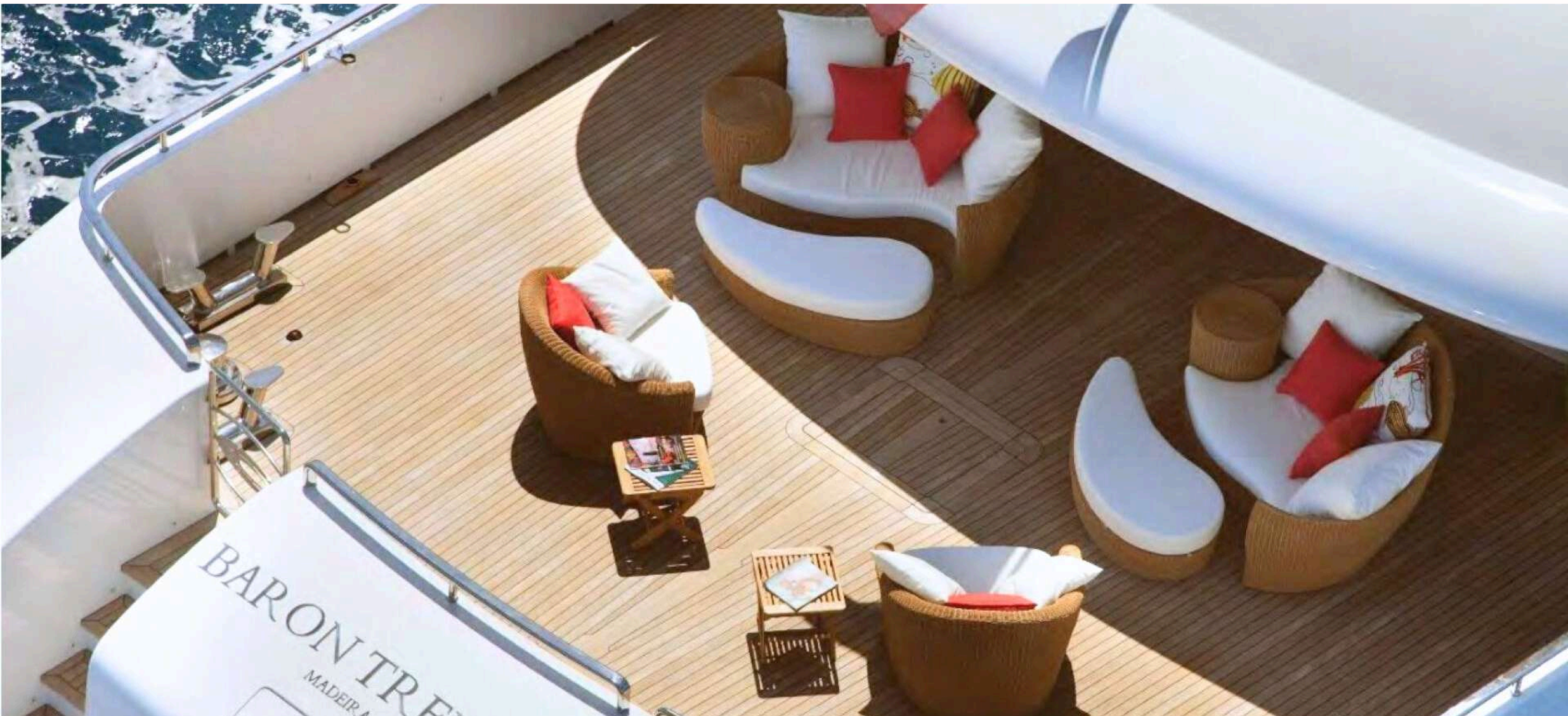
























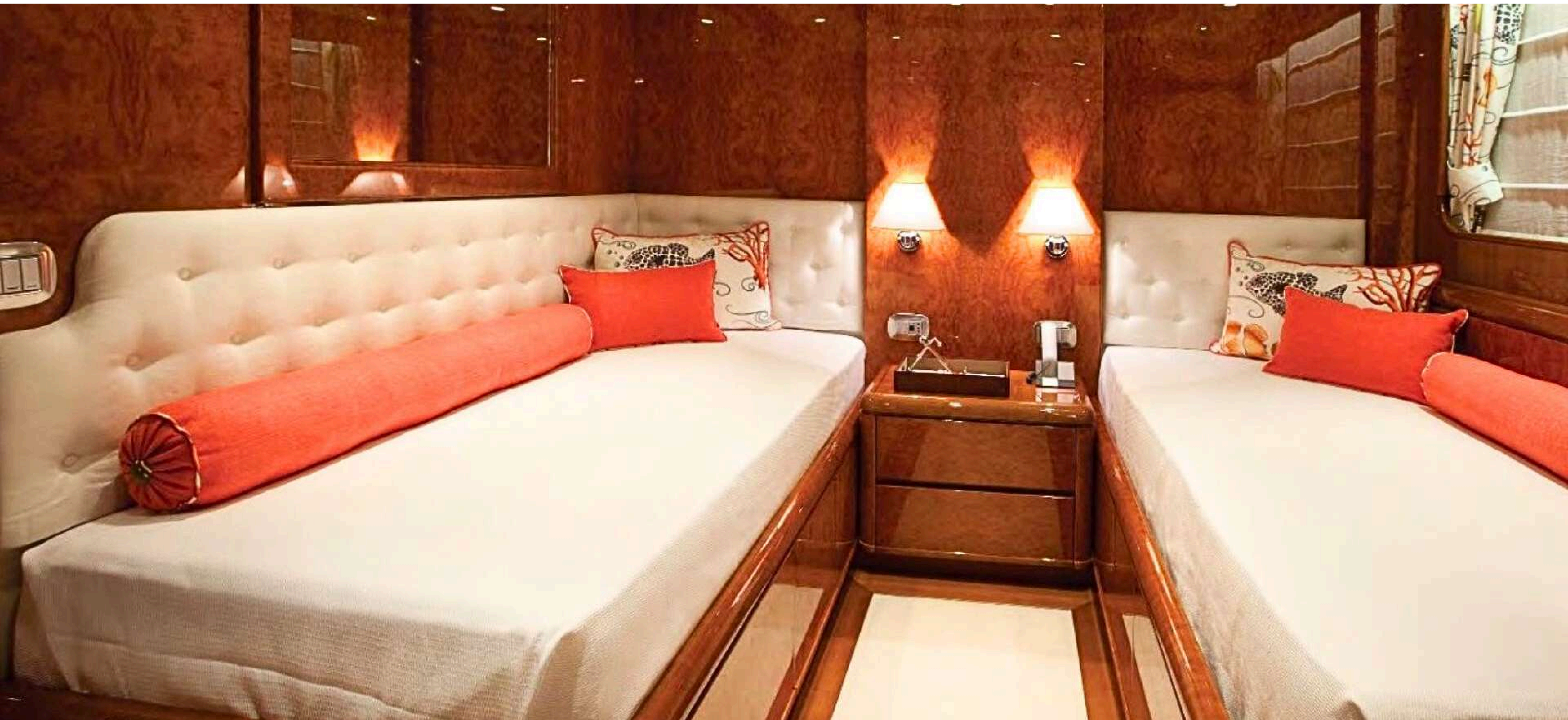














SPECIFICATIONS

BUILDER : Eurocraft

CRUISE SPEED : 10 Kt

MODEL : Explorer 44

MAX SPEED : 13 Kt

YEAR: 2011 **REFIT:** 2021

GUESTS CABINS : 6

HULL / SUPERSTRURE MATERIAL : Steel / Aluminium

MAX GUESTS CAPACITY : 12

LENGTH : 43.50 M

MAX GUESTS SLEEPING : 12

BEAM : 8.20 M

CONSUMPTION : 90 L/H @ 10 Kt

DRAFT : 3 M

AUTONOMY : 11 660 NM

NAVIGATION CLASS : A

FUEL TANK CAPACITY : 105 000 L

CLASSIFICATION: Commercial Unrestricted

WATER TANK : 23 270 L

FLAG: Portugal

BLACK WATER TANK : 4 270 L

GROSS TONNAGE : 478 GT

BOW AND STERN THRUSTER: BOW NAIAD MARINE VT 75 – 83 kW

MOTORISATION

Engines: 2 x MTU Type 12V 2000 M60, 600 kW

Engines hours: 6 060 H

Propulsion: Propeller Shafts

Fuel: Diesel

Propellers: Detra 5 Blades

NAVIGATION EQUIPMENT

GPS: FURUNO GPS Sensor mod. GD 150

VHF: FURUNO & SIMRAD

AIS: FURUNO AIS FA 150

Wind Instrument: FURUNO Wind Sonic

Depth sounder: 2 x FURUNO FE 700

Autopilot: Wheel Mark SIMRAD AP-50

Speedmeter: FURUNO

Compas: C. Plath Jupiter

Gyrocompas: Wheel Mark SIMRAD RG 85

EQUIPMENT

Generator: 3 x ONAN 80 kW 400 VAC, 3 phase, 50 Hz

Generators hours : 7 350 H

Watermaker: 2 x Seafresh H206A.F

Water Boilers:

Air conditioning: FRIGIT Tropical Air Conditioning

Inverter: 2 x Gianneschi

DECK EQUIPMENT

Anchor Windlass: 2 x Electric Vertical,
Data / Hydro Systems DZC 3300 11 kW

Anchor: 2 x 240kg HV Type
1 x Emergency

Anchor Chains: 350 Meters

Jacuzzi: Sundeck for 6 people

Cranes: 1 x Mor C-079 Tel, 1 200 Kg
1 x Mor C-0778 Tel Rb, 600 Kg

GALLEY AND LAUNDRY EQUIPMENT

Fridges: FRIGIT

Freezer: / Blast chiller (Coldline)

Cooking Equipment : 2 x AMBACH Electric Induction Kitchen

AMBACH Multifunctional Electric Braseria

RATIONAL Oven

INKSINK EVOLUTION10 Waste Disposal

Panasonic Microwave

CUPPONE Food Mixer

SAFETY EQUIPMENT

Life raft: 4X12 people life rafts

CCTV: Panasonic

AUDIO & TV EQUIPMENT

Each stateroom is equipped with SAMSUNG LED TV and AV rack with amplifier, DVD player and TV decoder, 2 x speakers and sub-woofer. Owner's Stateroom, main saloon and sky lounge have 5 x speakers and a sub-woofer.



Aquila yachting
29 Port Camille Rayon 06220 Golfe Juan FRANCE
www.aquilayachting.com

Contact: +33(0)6 10 27 79 66
Mail: sales@aquilayachting.com

